

Technische Daten/ Technical Data

KLUDI AMEO
3-hole basin mixer
DN 15

Ref.:
413930530

Finishes:
05 chrom

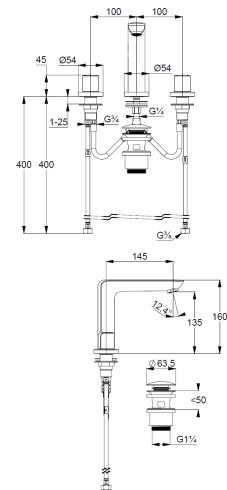
Product description
Manufacturer KLUDI GmbH & Co. KG
Typ: KLUDI AMEO
3-hole basin mixer
Ref.: 413930530

3-hole basin mixer
2-handle mixer
cylindricity handle, metal
3-hole mounted
aerator M24 PCA
ceramic headparts 90° (right/left)
flow rate at 3 bar 5 l/min.
fixed spout
flexible hoses G $\frac{3}{8}$ DVGW approved
shank-fixing
pop up waste G1 $\frac{1}{4}$ metal

Produktabbildung/ Product picture



Maßzeichnung/ Dimensional drawing



Durchfluss/ Flow rate

