

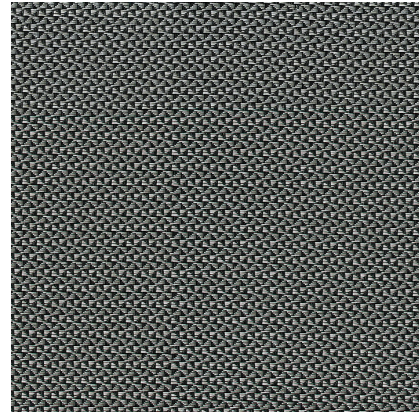
Model: LINKFLOOR ROLL CONTRACT DIAMOND

Codes: 100161345 - L167012573

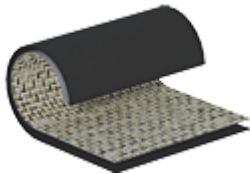
Group: G-232

Format: 200X1000

Thickness: 2.5 mm



## COMPOSITION



	Size	Material	Type of material
Layer 1	0.7	Braided vinyl	Vinyl fabric made up of a polyester core encapsulated in a vinyl solid
Layer 2	1.8	Vinyl substrate	PVC vinyl substrate with polyester and fiberglass interior

## FEATURES



Weaved material.



Water-and-moisture resistant, suitable for wet areas such as bathrooms and kitchens



5 year warranty for commercial use valid for vinyl materials that have been installed in rooms where they are exposed to normal wear and tear for their recommended End Use Category in accordance with ISO 10582.



Is suitable for installing on water radiant heating



It is necessary to apply adhesive for installing it.



15 year home use warranty valid for vinyl materials that have been installed in rooms where they are exposed to normal wear and tear for their recommended End Use category in accordance with ISO 10582.



Roll format - 2 x 10 metres.



Floor capable of dissipating excess electrical charges and distribute them over its entire surface

## DIMENSIONAL FEATURES

Item thickness	±0.15 mm	EN 428*
Length of face	No menor que el valor nominal MM	EN 426*
Width of face	No menor que el valor nominal MM	EN 426*

## LABORATORY TESTS

Abrasion resistance	0.068 mm/1.80 mm <sup>3</sup>	EN 660-1,2*
Acoustic insulation	Lw=12 dB	EN ISO 717-2*
Asymmetry/arch effect	≤2%	EN 427*
Castor chair effect	No damage %	
Commercial area class	33	EN 10582*
Curvature	1.5 mm	EN 434:1994*
Dimensional stability	0.05%	EN 434:1994*
Evaluation of propensity to accumulation of electrostatic charges	≤2 kV	EN 1815*
Fire resistance	Bfl-s1	EN 13501*
Formaldehyde emissions	E1	EN 717*
Fungus test	Grado 1	ASTM G21:96*
Furniture leg effect	No damage	EN 424*
Heat resistance	R=0.0639 m <sup>2</sup> K/W	EN 12664*
Private area class	23	EN 10582*
Residual footprint	0.08 mm	EN 433:1994*
Resistance to staining	Clase 0	EN 423*
Slip resistance (cls)	Clase 2	EN 12633*
Slip resistance (r)	R-10	DIN 51130*
Uv light fastness	≥Grado 8	ISO 105*

## PACKING

Base unit	PIECES	
Boxes	20 M2/BOX	
Gross weight	3.5 KG/M2	
Net weight	3.3816 KG/M2	
Pallets	320 M2/PAL	
Sale unit	M2	
Square meters	1 M2	
Units	20 M2/PIECE	

## SPECIAL PIECES

SAP	KEA	Description	Group	Boxes	Pallet	Units	SKU	Basic Unit	Net Weight	Gross weight
100174756	L167012669	ESP. PERF ADH LINKFLOOR ALUMINIO 3,5X270	G-121	10 ST/CS	1000 ST/PAL	10.58 ST/M2	ST	ST	0.37 KG/ST	0.39 KG/ST
100258737	L167013249	PERFIL ADH LINKFLOOR NEGRO 3,5X270	G-121	40 ST/CS	1000 ST/PAL	10.58 ST/M2	ST	ST	0.37 KG/ST	0.39 KG/ST
100222747	L167012942	TERM. PELD. ESC.NEGRO LINKFLOOR ROLL 200	G-135	10 ST/CS	1000 ST/PAL	1 ST/M2	ST	ST	0.5 KG/ST	0.52 KG/ST
100222706	L167012941	TERM. PELD. ESC.PLATA LINKFLOOR ROLL 200	G-126	10 ST/CS	1000 ST/PAL	1 ST/M2	ST	ST	0.5 KG/ST	0.52 KG/ST
100128267	L167901793	ZOCALO ALUMINIO 8X225	G-121	12 ST/CS	696 ST/PAL	5.56 ST/M2	ST	ST	1.57 KG/ST	1.62 KG/ST