

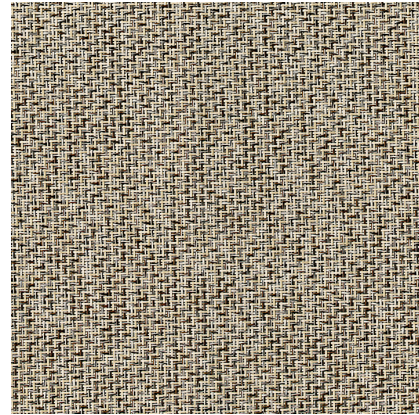
Model: LINKFLOOR ROLL CONTRACT CLAY

Codes: 100161335 - L167012571

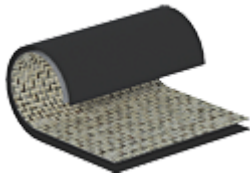
Group: G-232

Format: 200X1000

Thickness: 2.5 mm



### COMPOSITION



|         | Size | Material        | Type of material   |
|---------|------|-----------------|--|
| Layer 1 | 0.7  | Braided vinyl   | Vinyl fabric made up of a polyester core encapsulated in a vinyl solid |
| Layer 2 | 1.8  | Vinyl substrate | PVC vinyl substrate with polyester and fiberglass interior             |

### FEATURES



Weaved material.



Water-and-moisture resistant, suitable for wet areas such as bathrooms and kitchens



5 year warranty for commercial use valid for vinyl materials that have been installed in rooms where they are exposed to normal wear and tear for their recommended End Use Category in accordance with ISO 10582.



Is suitable for installing on water radiant heating



It is necessary to apply adhesive for installing it.



15 year home use warranty valid for vinyl materials that have been installed in rooms where they are exposed to normal wear and tear for their recommended End Use category in accordance with ISO 10582.



Roll format - 2 x 10 metres.



Floor capable of dissipating excess electrical charges and distribute them over its entire surface

### DIMENSIONAL FEATURES

|                |                                  |         |
|----------------|----------------------------------|---------|
| Item thickness | ±0.15 mm                         | EN 428* |
| Length of face | No menor que el valor nominal MM | EN 426* |
| Width of face  | No menor que el valor nominal MM | EN 426* |

## LABORATORY TESTS

|   |                               |               |
|---|-------------------------------|---------------|
| Abrasion resistance   | 0.068 mm/1.80 mm <sup>3</sup> | EN 660-1,2*   |
| Acoustic insulation   | Lw=12 dB                      | EN ISO 717-2* |
| Asymmetry/arch effect   | ≤2%                           | EN 427*       |
| Castor chair effect   | No damage %                   |               |
| Commercial area class   | 33                            | EN 10582*     |
| Curvature   | 1.5 mm                        | EN 434:1994*  |
| Dimensional stability   | 0.05%                         | EN 434:1994*  |
| Evaluation of propensity to accumulation of electrostatic charges | ≤2 kV                         | EN 1815*      |
| Fire resistance   | Bfl-s1                        | EN 13501*     |
| Formaldehyde emissions  | E1                            | EN 717*       |
| Fungus test   | Grado 1                       | ASTM G21:96*  |
| Furniture leg effect  | No damage                     | EN 424*       |
| Heat resistance   | R=0.0639 m <sup>2</sup> K/W   | EN 12664*     |
| Private area class  | 23                            | EN 10582*     |
| Residual footprint  | 0.08 mm                       | EN 433:1994*  |
| Resistance to staining  | Clase 0                       | EN 423*       |
| Slip resistance (cls)   | Clase 2                       | EN 12633*     |
| Slip resistance (r)   | R-10                          | DIN 51130*    |
| Uv light fastness   | ≥Grado 8                      | ISO 105*      |

## PACKING

|               |              |  |
|---------------|--------------|--|
| Base unit     | PIECES       |  |
| Boxes         | 20 M2/BOX    |  |
| Gross weight  | 3.8925 KG/M2 |  |
| Net weight    | 3.741 KG/M2  |  |
| Pallets       | 320 M2/PAL   |  |
| Sale unit     | M2           |  |
| Square meters | 1 M2         |  |
| Units         | 20 M2/PIECE  |  |

## SPECIAL PIECES

| SAP       | KEA        | Description                              | Group | Boxes    | Pallet      | Units       | SKU | Basic Unit | Net Weight | Gross weight |
|-----------|------------|--|-------|----------|-------------|-------------|-----|------------|------------|--------------|
| 100174756 | L167012669 | ESP. PERF ADH LINKFLOOR ALUMINIO 3,5X270 | G-121 | 10 ST/CS | 1000 ST/PAL | 10.58 ST/M2 | ST  | ST         | 0.37 KG/ST | 0.39 KG/ST   |
| 100258737 | L167013249 | PERFIL ADH LINKFLOOR NEGRO 3,5X270       | G-121 | 40 ST/CS | 1000 ST/PAL | 10.58 ST/M2 | ST  | ST         | 0.37 KG/ST | 0.39 KG/ST   |
| 100222747 | L167012942 | TERM. PELD. ESC.NEGRO LINKFLOOR ROLL 200 | G-135 | 10 ST/CS | 1000 ST/PAL | 1 ST/M2     | ST  | ST         | 0.5 KG/ST  | 0.52 KG/ST   |
| 100222706 | L167012941 | TERM. PELD. ESC.PLATA LINKFLOOR ROLL 200 | G-126 | 10 ST/CS | 1000 ST/PAL | 1 ST/M2     | ST  | ST         | 0.5 KG/ST  | 0.52 KG/ST   |
| 100128267 | L167901793 | ZOCALO ALUMINIO 8X225                    | G-121 | 12 ST/CS | 696 ST/PAL  | 5.56 ST/M2  | ST  | ST         | 1.57 KG/ST | 1.62 KG/ST   |